



Chick counting and boxing system



The Pas Reform chick counting and boxing system automatically counts and places day olds in chick boxes.

Key features

Key features of the chick counter are its minimal surface, its ability to automatically cope with different chick sizes, its micro-processor control system (with the option to connect it to a PC) and its friendly handling of the chicks. The Pas Reform chick counter is designed for use in both small and large hatcheries.

Counting

Counting is done as the chicks pass under an infrared counting head. Pas Reform have found this to be a very quick and efficient means of counting chicks at the rate of 30,000 per hour. By placing a second unit in parallel 60,000 day olds/hour can be processed. The machine is accurate to within 2 chicks per thousand. The counting is controlled by a micro-processor, which can be connected to a personal computer for administrative purposes.





Chick counting and boxing system

A display on the control panel shows the number of chicks per box and the total number of chicks counted. The number of chicks per box or compartment is adjustable. The sensor is easily removed for easy cleaning.

Animal welfare

The handling of one day olds is of great importance to the customers of a hatchery, as rough handling can adversely affect their chicks. For this reason, both the speed of the belt and the height of any drop the chicks experience are reduced to an absolute minimum.

Options

Various options can be added to the system, including a stacker for filled chick boxes, a destacker for empty chick boxes, a separator, a chicken take-off system and waste treatment equipment. The discharge side of the chick counter can be equipped with an automatic spraying unit for vaccinating the day olds against infectious bronchitis and/or Newcastle disease.



Counting is done as the chicks pass under an infra-red counting head



The chick belt of the Pas Reform chick take-off system is placed partly under a non-driven roller conveyor for hatcher trays to give space to four operatives

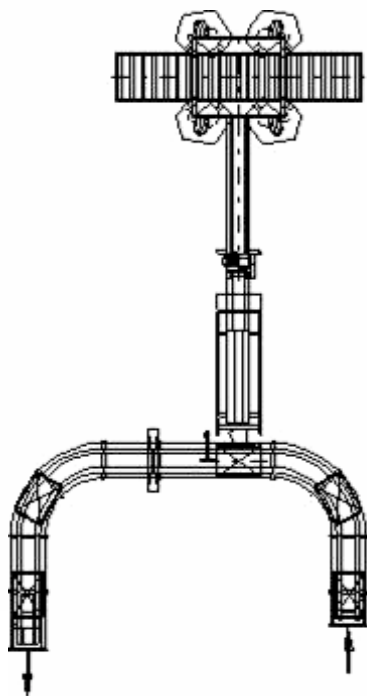


Type of chick boxes: one, two or four compartments

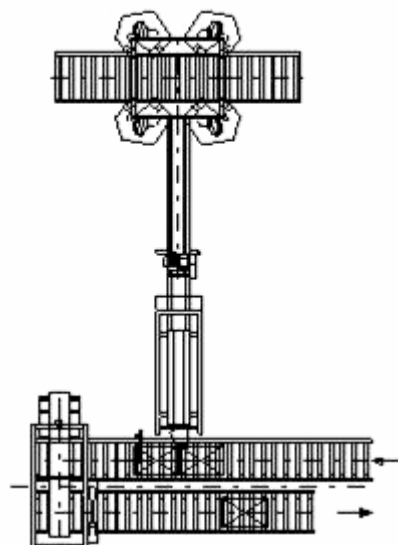




Chick counting and boxing system



Chick counting and boxing system, type CC-11



Chick counting and boxing system, type CC-12

Technical Specifications

Capacity	30,000 chicks/hour	Electrical requirements	230/400 Volts, 3 Ph + 0 + PE
Power consumption	0.5 kW	Air pressure	6 bar
Materials	the machine is constructed of stainless steel		
Type of chick boxes	one or two compartment boxes (optional: four compartments)		
Box transport CC-11	The boxing system consists of a chain conveyor for box transport, which can be extended in length and which can be connected to extra transport chains, stackers and destackers		
Box transport CC-12	The boxing system is designed for one man operation and consists of roller conveyors for box transport (two for one chick counter). Filled boxes are pneumatically pushed from the supply box conveyor onto the take off box conveyor.		
Excluding compressor			

In our commitment to quality improvement through continuous research, we reserve the right to alter specifications of our products without notice

